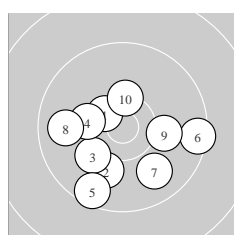
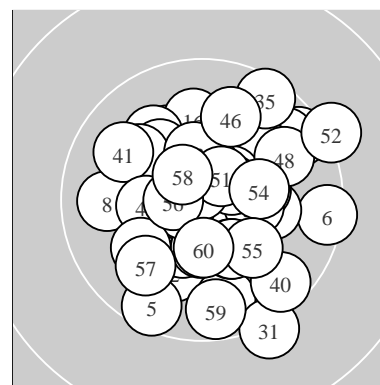
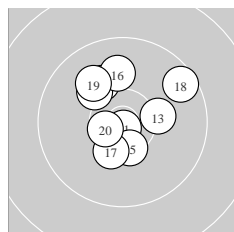


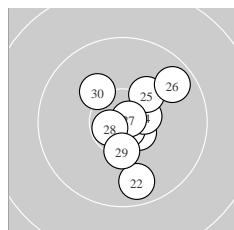
Ergebnis: **611.8** (584)
 Serien: 100.3 102.2 103.7 101.1 102.8 101.7
 Zähler: 44 16 0 0 0 0 0 0 0
 Innenzehner: 26
 weiteste: 1364 (52), 1359 (31), 1180 (6)
 beste Teiler 92.3 (49.) 93.7 (11.) 106.4 (27.)
 Trefferlage 0.75 mm rechts, 0.07 mm tief
 Streuwert 4.82, horizontal: 4.74, vertikal: 4.91



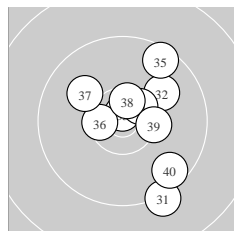
Serie 1:
 10.5 * 10.0 ↘ 10.2 ↙ 10.3 ← 9.6 ↘
 9.5 → 9.9 ↘ 9.8 ← 10.1 → 10.4 *
 beste Teiler 349.8 (1.) 455.9 (10.) 557.3 (4.)
 Trefferlage 0.55 mm links, 2.28 mm tief
 Streuwert 5.56, horizontal: 6.40, vertikal: 4.55



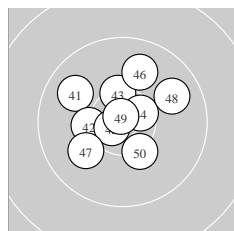
Serie 2:
 10.8 * 10.1 ↖ 10.3 → 10.1 ↖ 10.4 *
 10.0 ↑ 10.3 * 9.6 ↗ 10.0 ↖ 10.6 *
 beste Teiler 93.7 (11.) 290.0 (20.) 417.3 (15.)
 Trefferlage 0.17 mm links, 2.07 mm hoch
 Streuwert 4.47, horizontal: 4.41, vertikal: 4.53



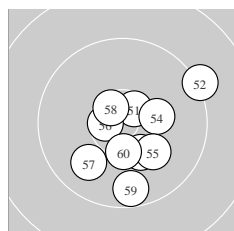
Serie 3:
 10.6 * 9.8 ↘ 10.8 * 10.5 * 10.2 ↗
 9.7 ↗ 10.8 * 10.7 * 10.4 * 10.2 ↖
 beste Teiler 106.4 (27.) 140.1 (23.) 218.8 (28.)
 Trefferlage 1.51 mm rechts, 0.11 mm tief
 Streuwert 3.96, horizontal: 3.24, vertikal: 4.56



Serie 4:
 9.3 ↘ 10.0 ↗ 10.8 * 10.5 * 9.6 ↗
 10.5 * 10.0 ↖ 10.5 * 10.3 * 9.6 ↘
 beste Teiler 122.0 (33.) 324.8 (38.) 353.3 (34.)
 Trefferlage 2.44 mm rechts, 0.43 mm hoch
 Streuwert 5.44, horizontal: 4.54, vertikal: 6.21



Serie 5:
 9.9 ↖ 10.3 * 10.4 * 10.6 * 10.7 *
 9.9 ↑ 10.0 ↙ 9.9 ↗ 10.8 * 10.3 ↘
 beste Teiler 92.3 (49.) 189.2 (45.) 311.2 (44.)
 Trefferlage 0.52 mm links, 1.25 mm hoch
 Streuwert 4.37, horizontal: 4.68, vertikal: 4.03



Serie 6:
 10.6 * 9.2 ↗ 10.3 ↘ 10.3 → 10.1 ↘
 10.6 * 9.9 ↙ 10.6 * 9.7 ↓ 10.4 *
 beste Teiler 270.0 (56.) 285.0 (51.) 299.4 (58.)
 Trefferlage 1.84 mm rechts, 1.80 mm tief
 Streuwert 4.93, horizontal: 4.89, vertikal: 4.97

Meyton Elektronik

ISSF Prone Men – *Wertung* – **offene Klasse**

StartNr: 13

StandNr: 44

17. Februar 2019 13:47

Martin-Trefz, Regina #44252110

SV Neuenhagen / SV Neuenhagen

Unterschrift des Schützen

Meyton Elektronik