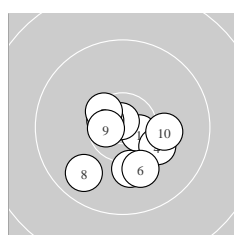
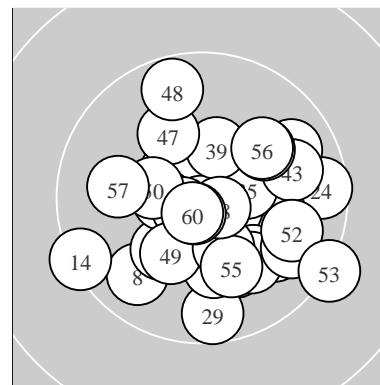
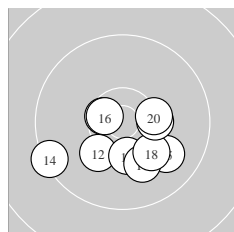


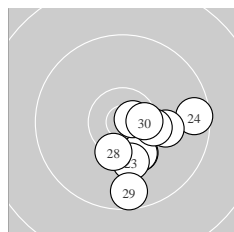
Ergebnis:	615.7	(589)
Serien:	103.6	101.9 102.2 104.1 101.9 102.0
Zähler:	49	11 0 0 0 0 0 0 0 0
Innenzehner:	31	
weiteste:	1331	(53), 1236 (14), 1086 (24)
beste Teiler	78.5	(38.) 93.9 (2.) 156.1 (59.)
Trefferlage	1.47	mm rechts, 1.62 mm tief
Streuwert	4.16,	horizontal: 4.45, vertikal: 3.84



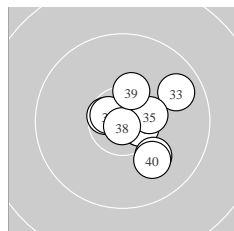
Serie 1:	10.6 *	10.8 *	10.6 *	10.2 ↘	10.2 ↓
	10.1 ↓	10.5 *	9.8 ↗	10.6 *	10.2 →
beste Teiler	93.9	(2.) 252.7	(9.) 267.6	(1.)	
Trefferlage	0.37	mm rechts,	1.99	mm tief	
Streuwert	3.66,	horizontal: 3.89,	vertikal: 3.41		



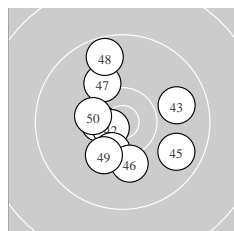
Serie 2:	10.6 *	10.2 ↗	10.3 *	9.4 ↖	9.9 ↘
	10.6 *	10.1 ↓	10.2 ↘	10.3 *	10.3 *
beste Teiler	284.6	(16.) 307.4	(11.) 482.4	(20.)	
Trefferlage	0.38	mm rechts,	2.81	mm tief	
Streuwert	4.43,	horizontal: 5.46,	vertikal: 3.07		



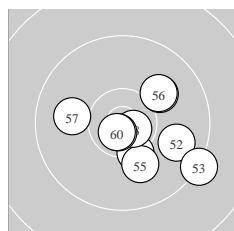
Serie 3:	10.3 *	10.3 *	10.2 ↓	9.6 →	10.8 *
	10.1 →	10.4 *	10.4 *	9.6 ↓	10.5 *
beste Teiler	158.2	(25.) 330.2	(30.) 470.9	(28.)	
Trefferlage	3.26	mm rechts,	3.05	mm tief	
Streuwert	3.52,	horizontal: 3.42,	vertikal: 3.63		



Serie 4:	10.6 *	10.6 *	9.8 ↗	10.6 *	10.4 *
	10.7 *	10.1 ↓	10.9 *	10.4 *	10.0 ↓
beste Teiler	78.5	(38.) 232.1	(36.) 256.3	(31.)	
Trefferlage	2.28	mm rechts,	0.23	mm tief	
Streuwert	3.36,	horizontal: 3.29,	vertikal: 3.43		



Serie 5:	10.5 *	10.7 *	9.9 →	10.4 *	9.8 ↘
	10.2 ↓	10.1 ↖	9.7 ↖	10.2 ↗	10.4 *
beste Teiler	200.3	(42.) 352.3	(41.) 455.9	(50.)	
Trefferlage	0.26	mm links,	0.21	mm tief	
Streuwert	4.94,	horizontal: 4.67,	vertikal: 5.19		



Serie 6:	10.3 *	9.9 ↘	9.3 ↘	10.1 ↗	10.1 ↓
	10.1 ↗	10.0 ←	10.7 *	10.8 *	10.7 *
beste Teiler	156.1	(59.) 162.8	(60.) 183.4	(58.)	
Trefferlage	2.78	mm rechts,	1.40	mm tief	
Streuwert	4.68,	horizontal: 5.34,	vertikal: 3.90		

ISSF Prone Men – *Wertung* – **offene Klasse**

StartNr: 79

StandNr: 49

16. Februar 2019 10:55

Malbrecht, Rene´ #44252826

NBSG / Nord–Berliner Sch.–Gem. I

Unterschrift des Schützen

Meyton Elektronik