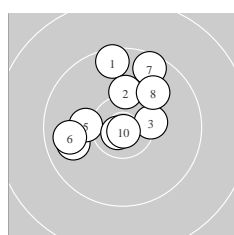
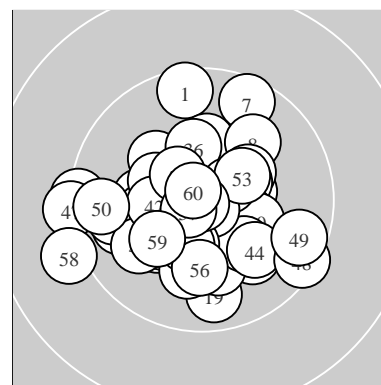
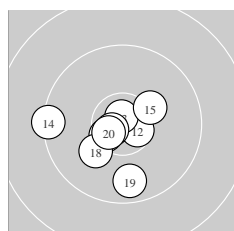


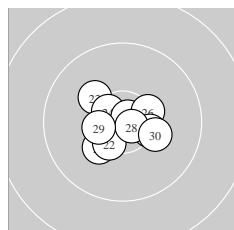
Ergebnis:	615.6	(589)
Serien:	101.4	103.7 104.3 103.2 99.5 103.5
Zähler:	49	11 0 0 0 0 0 0 0 0
Innenzehner:	30	
weiteste:	1447	(58), 1318 (47), 1241 (14)
beste Teiler	38.8	(54.) 70.6 (10.) 106.6 (11.)
Trefferlage	1.12 mm	links, 0.98 mm tief
Streuwert	4.48,	horizontal: 5.01, vertikal: 3.89



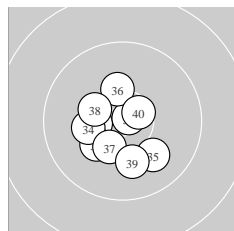
Serie 1:	9.6 ↑	10.2 ↑	10.4 *	9.9 ←	10.2 ←
	9.8 ←	9.6 ↗	10.0 ↗	10.8 *	10.9 *
beste Teiler	70.6	(10.) 127.4 (9.) 479.2 (3.)			
Trefferlage	1.08 mm	links, 2.76 mm hoch			
Streuwert	5.08,	horizontal: 5.21, vertikal: 4.95			



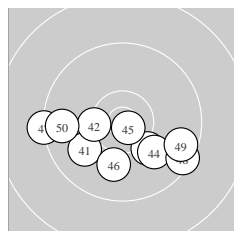
Serie 2:	10.8 *	10.6 *	10.8 *	9.4 ←	10.3 ↗
	10.7 *	10.5 *	10.2 ↗	9.8 ↓	10.6 *
beste Teiler	106.6	(11.) 127.4 (13.) 199.9 (16.)			
Trefferlage	1.67 mm	links, 1.51 mm tief			
Streuwert	4.06,	horizontal: 4.62, vertikal: 3.39			



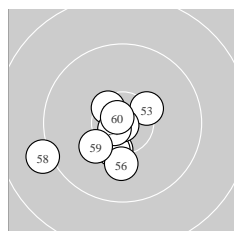
Serie 3:	10.2 ↗	10.4 *	10.2 ↘	10.6 *	10.8 *
	10.4 *	10.4 *	10.7 *	10.4 *	10.2 ↘
beste Teiler	123.7	(25.) 165.6 (28.) 301.2 (24.)			
Trefferlage	0.06 mm	links, 0.42 mm tief			
Streuwert	3.29,	horizontal: 3.87, vertikal: 2.60			



Serie 4:	10.4 *	10.8 *	10.2 ↗	10.2 ←	10.0 ↘
	10.3 ↑	10.3 *	10.3 *	10.1 ↓	10.6 *
beste Teiler	113.5	(32.) 303.8 (40.) 451.8 (31.)			
Trefferlage	1.19 mm	links, 1.29 mm tief			
Streuwert	3.74,	horizontal: 3.67, vertikal: 3.81			



Serie 5:	10.0 ↗	10.4 *	10.2 ↘	10.0 ↘	10.8 *
	10.0 ↓	9.3 ←	9.5 ↘	9.6 ↘	9.7 ←
beste Teiler	134.3	(45.) 478.8 (42.) 609.7 (43.)			
Trefferlage	0.56 mm	links, 3.38 mm tief			
Streuwert	5.93,	horizontal: 8.02, vertikal: 2.45			



Serie 6:	10.4 *	10.4 *	10.4 *	10.9 *	10.5 *
	10.1 ↓	10.7 *	9.1 ←	10.2 ↗	10.8 *
beste Teiler	38.8	(54.) 130.1 (60.) 167.6 (57.)			
Trefferlage	2.14 mm	links, 2.07 mm tief			
Streuwert	3.98,	horizontal: 4.48, vertikal: 3.41			

ISSF Prone Men – *Wertung* –

offene Klasse

StartNr: 91

StandNr: 44

10. Oktober 2018 17:21

Martens, Hendrik #44252713

PSV Olympia Berlin e.V. / PSV Olympia Berlin I

Unterschrift des Schützen

Meyton Elektronik